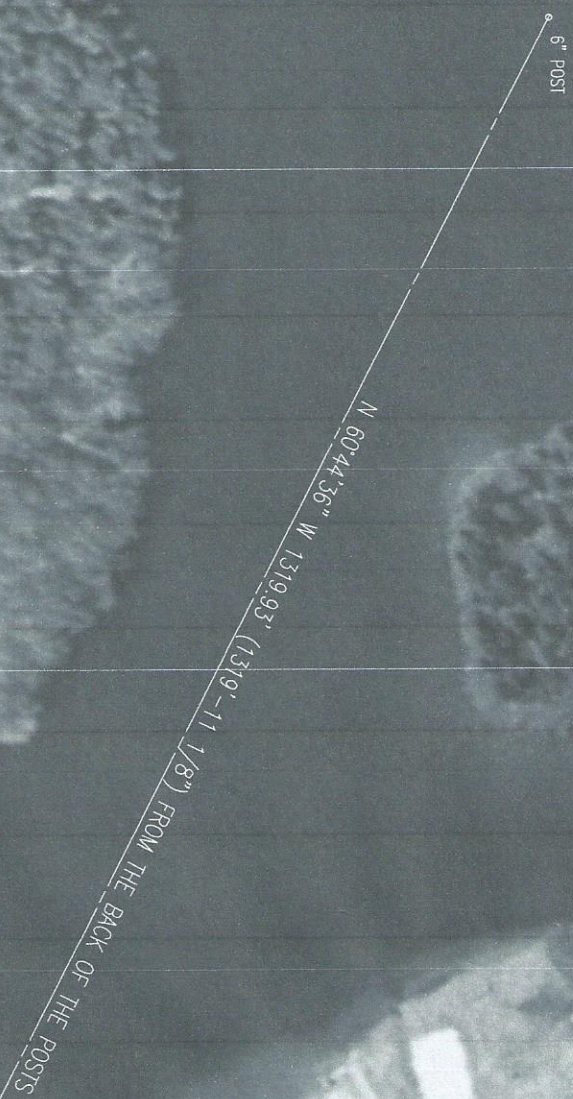


SURVEYOR'S CERTIFICATE:
 THE UNDERSIGNED, BEING A REGISTERED LAND SURVEYOR
 OF THE STATE OF VIRGINIA (REG. NO.1458), DOES
 HEREBY CERTIFY TO AS FOLLOWS:
 1.) THE FIELD SURVEY WAS PERFORMED UTILIZING A
 TRIMBLE S6 TOTAL STATION SURVEY INSTRUMENT WITH A
 DISTANCE MEASUREMENT ACCURACY (STANDARD DEVIATION)
 OF ±(0.01 FEET + 2PPM)



1/4 MILE RACE COURSE SURVEY
 CHRIS GREENE LAKE
 ALBERMARLE COUNTY, VIRGINIA
 SCALE: 1" = 100'
 AUGUST 5, 2009
 PREPARED FOR: VIRGINIA LMSC
 KIRK HUGHES & ASSOCIATES
 LAND SURVEYORS & PLANNERS
 220 EAST HIGH STREET
 CHARLOTTESVILLE, VA 22902
 (434) 296-6942
 c:\Surveys\2009\2009-062\2009-062.DWG